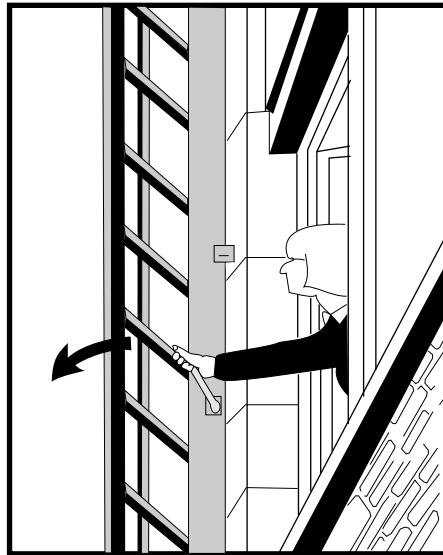


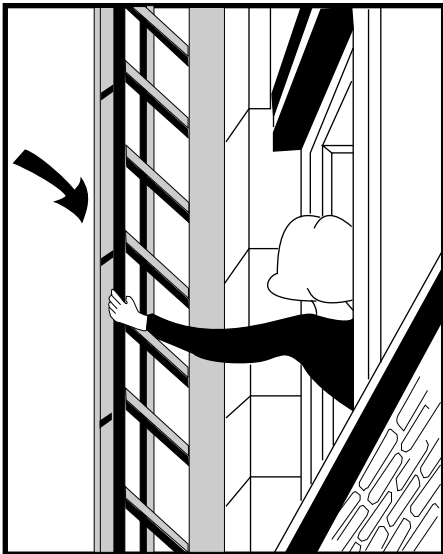
**Looks like a drainpipe**



**Deploys in three seconds**



**Guard rail for extra safety**



**Safe, Secure, Dependable**



**The three second solution  
to burglar-proof access and emergency egress**

# JOMY®

**the discreet access and  
egress solution**

Cap prevents water from entering ladder column.

Handle requires less than five pounds of force to deploy entire ladder.

Patented Opening Mechanism prevents unauthorized access yet allows any handle to deploy the entire ladder, regardless of height or number of handles.

Mounting Bracket attaches ladder to wall while allowing ladder to stand as a column directly on the ground.

Ladder requires no special wall reinforcement or through-bolting since it does not hang on the building. A custom masonry expansion bolt is supplied or it can be lagged into framing.

Stainless Steel attachment bolts prevent rust or corrosion.

Stainless Steel Baseplate prevents scratching, rust and corrosion.

**The JOMY Retractable Ladder can be configured in heights up to 300 ft. The rated capacity of the ladder is one 200 lbs. person every six feet for the entire height of the ladder.**

Stainless steel pivot pins with Teflon bushings prevent metal on metal contact and prevent rust and corrosion.

Extruded Aluminum Safety Rail adds safety and security during ascent or descent and enables assistance, if required.

Two foot wide rungs with slip-resistant ribbed surface were tested by Underwriter's Laboratories with a 1,000 lb static load for one hour without breaking.

Individual rungs are counterweighted with stainless steel springs to allow the ladder to be easily closed regardless of height.

Extruded Anodized Aluminum construction permanently avoids rust and corrosion providing maintenance-free operation.

**UL listed . . . . . 19 RO**

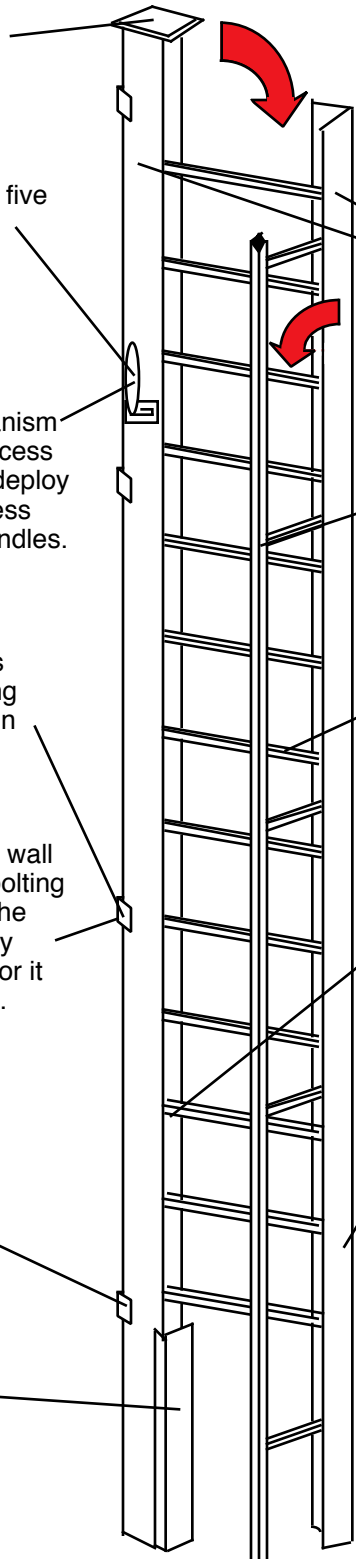
**BOCA Evaluated .RR 91-17**

**ICBO Evaluated . . ER 4422**

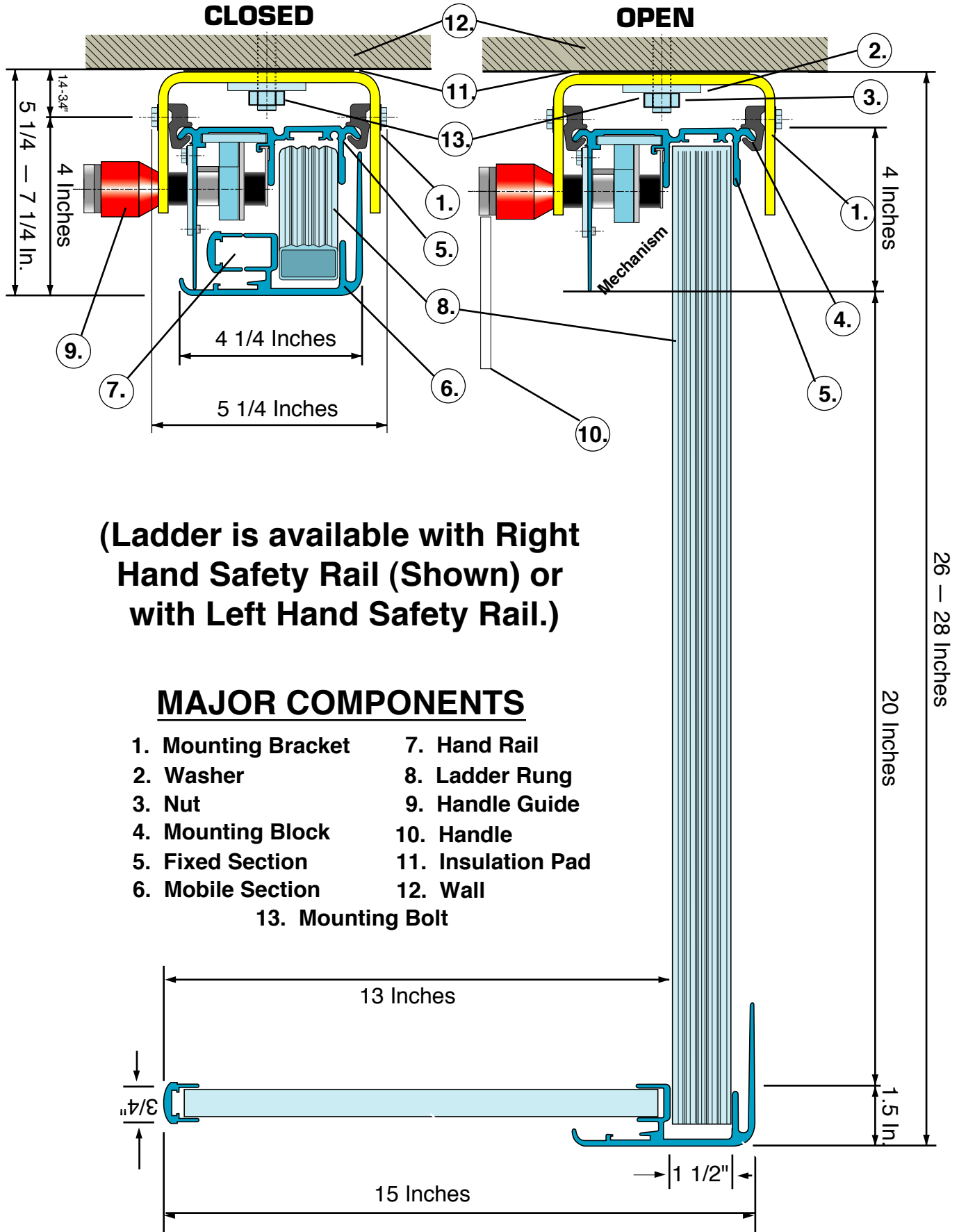
**San Francisco Product  
Approval No.**

**. . . . 05515 JOM. 198**

**Meets OSHA and ANSI  
Standards**



## Cross Section View



**(Ladder is available with Right Hand Safety Rail (Shown) or with Left Hand Safety Rail.)**

## MAJOR COMPONENTS

1. Mounting Bracket
2. Washer
3. Nut
4. Mounting Block
5. Fixed Section
6. Mobile Section
7. Hand Rail
8. Ladder Rung
9. Handle Guide
10. Handle
11. Insulation Pad
12. Wall
13. Mounting Bolt

# GENERAL INFORMATION

Section 05515  
Ladder & Rungs

## 1. PRODUCT NAME

JOMY® Retractable Ladder/Balcony

## 2. MANUFACTURER/ DISTRIBUTOR

JOMY®, Inc.  
P. O. Box 577  
Louisville, CO 80027  
Phone: (800) 255-2591  
(720) 304-6001  
Fax: (720) 304-6007

## 3. PRODUCT DESCRIPTION

**Basic Use:** Supplementary means of egress for emergency exit or rescue or for permanent roof access on outside walls where space or unauthorized access are concerns. On inside walls, provides access to rooftop hatches while being unobtrusive.

**Composition and Materials:** Fixed and mobile vertical ladder stiles are extruded aluminum sections formed from 6063-T6 alloy. Non-slip tubular rungs are formed from 6005-T5 and T6 aluminum alloy. Pivot pins, counter-weighting springs, attachment bolts, and base plate are stainless steel. Balcony is fabricated of 6063 T-6 aluminum alloy. Fasteners are stainless steel.

Ladder is connected to the structure with U-shaped brackets of 6063-T6 aluminum alloy. Wall brackets are adjustable and are pre-punched for a 1/2-inch custom expansion bolt (provided) or other fasteners depending on exterior construction.

**Color:** The JOMY® Retractable Ladder & Balcony is available in standard anodized aluminum finish, may be painted on-site to blend into any exterior, or special ordered in custom colors.

**Sizes:** The JOMY® Retractable Ladder is available in standard sizes up to 300 ft. Balconies are available in standard and custom sizes.

## 4. TECHNICAL DATA

Tested and listed by Underwriters Laboratories as having complied with all

aspects of Uniform Building Code Standard No. 33-3 for exit ladder device. UL listed (19RO) as supplementary means of egress. Evaluated by BOCA and ICBO evaluation services, and recognized as a supplemental escape device for use up to 30 feet under Appendices of Uniform Building and Fire Codes, and as a ladder device to provide access to mechanical equipment as required by the Uniform Mechanical Code. Test reports are available on request.

## 5. INSTALLATION

Requires two men approximately three hours to install ladder with no section weighing over 55 lbs. Ladder stands as a column directly on the ground and is attached at approximately 5 ft. intervals. Balcony is shipped disassembled with assembly occurring during simple two person, two hour installation.

## 6. AVAILABILITY AND COST

**Availability:** The JOMY® Retractable Ladder & Balconies are available from JOMY®, Inc., P. O. Box 577, Louisville, CO 80027. Standard sizes are in stock with delivery nationally within seven days of order. Call (800) 255-2591 or (720) 304-6007.

**Cost:** The JOMY® Retractable Ladder is one-third to one-fifth the cost of traditional exterior fire escapes.

## 7. WARRANTY

The JOMY® Retractable Ladder & Balconies are warranted to be free of any defects in materials or workmanship for 1 year if installed according to manufacturer specifications.

## 8. MAINTENANCE

The JOMY® Retractable Ladder & Balconies are virtually maintenance free and impervious to weather. While never requiring any lubricants, the surface may be cleaned utilizing household cleaners or detergents.

## 9. TECHNICAL SERVICES

JOMY® Products, Inc. provides a technical support group staffed with well-trained professionals to assist with any questions or problems. Call (800) 255-2591.