



DRL FLAT ROOF ACCESS DOOR

I. APPLICATION

PVC roof access door with the base designed for flat roofs.

Parameter	Value/type	Marking
Roof angle	0° - 5°	
Roofing base type	membrane, roofing felt paper, green roofs, gravel roofs	-

II. ROOF ACCESS DOOR ELEMENTS

L.p.	Element	Quantity	Description
1.	Sash with insulated sandwich panel and frame which is base of the roof access door	1	Insulated sandwich panel filled with the XPS, the sash coated with aluminium sheet metal in RAL 7022 secured with a modified polyester, locking handle, gas springs to facilitate opening Multi-chamber PVC profile
2.	Assembly set	1	
3.	Profiles fastening the roofing	4	Profiles mechanically mounting roofing to the frame

IV. TECHNICAL PARAMETERS

Parameter	Unit	Value	Harmonized standard
U _{window}	[BTU(hft°F)]	0,12	EN 14351-1:2006+A2:2016
U _{frame}	[BTU(hft°F)]	npd*	
Ψ	[W/mK]	npd	
R _w	[dB]	30 (0; -2)	
Wind load resistance		Class C5/B5	
Snow load resistance		npd	
Resistance to fire		npd	
Resistance to external fire		npd	
Watertightness Unshielded (A)		E900	
Impact resistance		Class 5 – 950 mm	
Load bearing capacity of safety devices		Threshold value	
Air permeability		Class 4	

* no performance determined

** depending on the roof access door size

V. DECLARATION OF PERFORMANCE

Harmonized standard for the product	Marking	Declaration of Performance No.
EN 14351-1:2006 +A1:2010	CE	R68/CPR/14351/XX**

** - year of the declaration e.g. R68/CPR/14351/17 issued in 2017

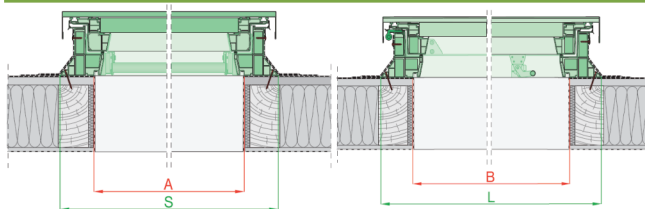
III. SIZES

There are available 3 standard sizes.

		Width A = from 27 1/2 to 48 inch			
		27 1/2	30	36	48
Height B = from 30 to 51 1/8 inch	30				
	36				
	48				
	51 1/8				

- standard size
 - special order size
 - special size

VI. ASSEMBLY INFORMATION

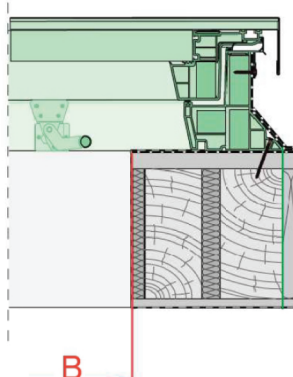
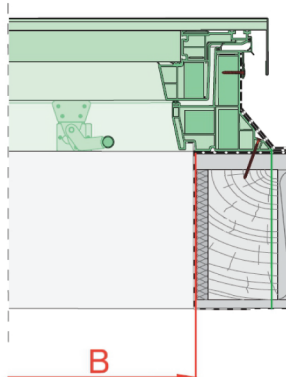


Roof access door commercial size is an opening size in the roof (size A, B). Tolerance of the opening dimensions within $+1\frac{1}{2}$ inch per side is possible.

DRL 27 $\frac{1}{2}$ x 51 $\frac{1}{8}$ (70x130) size have an extension (about 8 inch) to create additional step on roof itself which can be see in picture below on the right. This design further increase comfort of using DRL in combine with LML loft ladders.

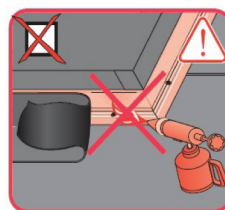
DRL 30x30, 30x36, 36x36

Special size 27 $\frac{1}{2}$ x 51 $\frac{1}{8}$



DRL				
	A	B	S	L
	[inch]		[inch]	
30x30	30-31 $\frac{1}{2}$	30-31 $\frac{1}{2}$	39%	39%
30x36	30-31 $\frac{1}{2}$	36-37 $\frac{1}{2}$	39%	44%
36x36	36-37 $\frac{1}{2}$	36-37 $\frac{1}{2}$	44%	44%

Do not heat up PVC profiles!



DRL in non-standard sizes can be installed on roofs with an angle of inclination from 0 to 5 degrees.

VII. DETAILED DIMENSIONS

Roof access door size [inch]	Frame external size S x L	Distance between lining grooves p x q [inch]	Height h
30x30	39 $\frac{1}{8}$ x 39 $\frac{1}{8}$	28 $\frac{3}{4}$ x 28 $\frac{3}{4}$	8
30x36	39 $\frac{1}{8}$ x 44 $\frac{1}{8}$	28 $\frac{3}{4}$ x 33 $\frac{7}{8}$	8
36x36	44 $\frac{1}{8}$ x 44 $\frac{1}{8}$	33 $\frac{7}{8}$ x 33 $\frac{7}{8}$	8
27 $\frac{1}{2}$ x 51 $\frac{1}{8}$ (70x130)	35 $\frac{3}{8}$ x 68 $\frac{7}{8}$	25 $\frac{1}{8}$ x 58 $\frac{5}{8}$	8

