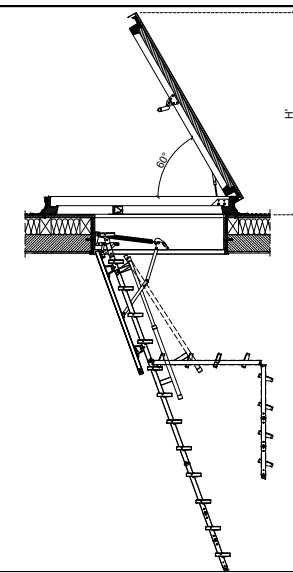
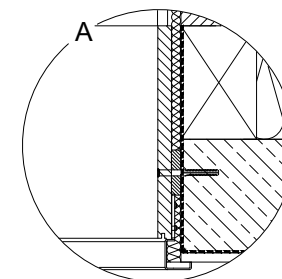
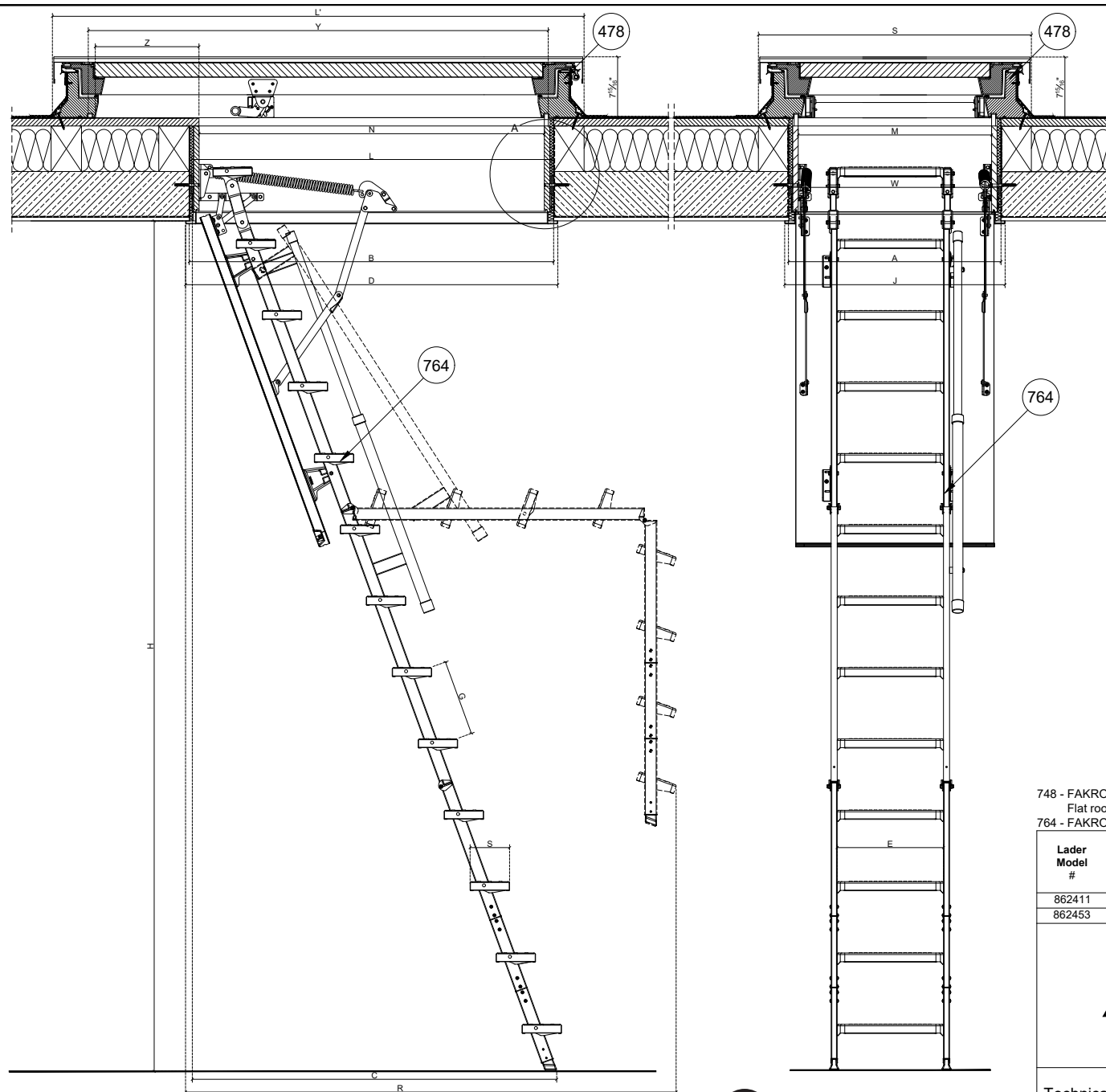
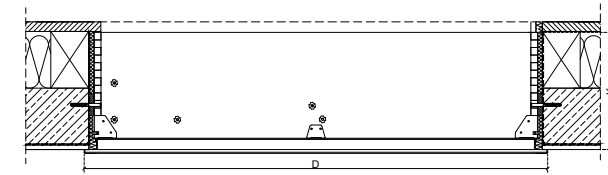


Room for a step on a roof surface designed in purpose



DRL - Flat Roof Access Hatch					
A	B	Y	S	L'	H'
27 ⁷ / ₁₆ "	51 ¹ / ₁₆ "	59 ¹ / ₂ "	35 ³ / ₈ "	68 ⁵ / ₁₆ "	66 ⁵ / ₁₆ "



748 - FAKRO DRL 70x130 cm (AxB) - US model 27.5"x59.5" (AxY)
Flat roof hatch
764 - FAKRO LML Metal attic ladder

K	E	G	S
Folded ladder height	Tread length	Distance between treads	Tread width
12 ¹ / ₂ "	13 ³ / ₄ "	9 ³ / ₁₆ "	5 ¹ / ₈ "

Lader Model #	LML - Loft ladder dimensions									
	H Ceiling height	A Rough opening	B Rough opening	R Projection	C Landing space	WxL Outside frame dimension	MxN Internal frame dimensions	J Loft ladder width with trims	D Loft ladder length with trims	Z Roof Step depth
862411	7'7 ³ / ₄ " - 9'2 ³ / ₄ "	27 ¹ / ₂ "	47"	65"	47 ¹ / ₄ "	27"x46 ³ / ₄ "	25 ¹ / ₂ "x44 ⁷ / ₈ "	28 ¹ / ₂ "	48 ¹ / ₄ "	13 ⁷ / ₈ "
862453	9'2 ³ / ₄ " - 10'3"	27 ¹ / ₂ "	51"	69 ¹ / ₂ "	51 ¹ / ₄ "	27"x50 ³ / ₈ "	25 ¹ / ₂ "x48 ⁷ / ₈ "	28 ¹ / ₂ "	52 ¹ / ₄ "	9 ¹ / ₂ "

DRL+LML

FAKRO



Technical drawing:
LML 3-section loft ladder with metal ladder, DRL
FAKRO Flat Roof Access Hatch

FORMAT:
Letter

SCALE:
1:20

DATE:
12.2018



Warning! The present drawing is for informational-demonstrative purposes only and as such cannot constitute a basis for performance. All dimensions presented in this drawing should be verified on site. Because of the fact that the drawing is a schematic one, FAKRO shall not assume any responsibility for the actual installation quality. This drawing is FAKRO's property and cannot be published or used publicly without our written consent.